



BRINGING THE WORLD BACK HOME

# RPCV NEWS

[www.rpcv-wa.org](http://www.rpcv-wa.org)

February 2006

WASHINGTON STATE PEACE CORPS ASSOCIATION

## Presidents' Envoy

submitted by Karima Homman-Ludiye & Brian Gay, Co-Presidents

The rain keeps a-coming. And, as we may paraphrase an old adage, it is better to raise a single umbrella than to sit cursing the water trickling down the back of your neck. This applies, in some ways, to the experience of the presidency of the WSPCA over the past year. A year ago, we discovered difficulties with our membership list, an undemocratically lead organization, dropping membership and general apathy throughout the group. Our monthly "Eats Out" social event was the best thing going. The team of officers, (we call them the board) decided we needed to:

- give more support to our members
- donate our assets to causes that make sense
- strengthen our relations with the recruiting office and other state RPCV affiliates
- establish more "3rd goal" avenues: presenting the world to Seattle
- connect with more prospective volunteers and nominees
- and more.



2005 holiday party  
(Michael Le)

## What happened in 2005

- We held elections, began talking about change and presenting our case to you here each month.
- We began holding meetings on a monthly basis and eventually settled on a regular schedule of 1st Saturday work parties, 2nd Saturday meetings / discussion groups and 3rd Friday "Eats Out."
- We gave \$900 to relief from the December, 2004 Tsunami and began discussion on a book drive and fund-raising for Katrina hurricane relief, possibly using the funds from 2006 calendar sales.
- We supported "Quest for the Crest," 2 Peace Corps Partnership projects, wells in India and scholarships in Uganda.
- Through more contact with the recruiting office we saw more prospective volunteers and nominees at our "Eats Out," summer picnic, and holiday party.
- We straightened up our membership problems with NPCA, and began talking about how to reach our membership.
- We moved our P.O. Box so it was more easily accessed by the membership coordinator and treasurer.
- We decided to restart a speakers bureau and met with an interested member who began researching the possibilities.
- We managed to sell 800 calendars at \$9 apiece, and an extra dollar if it was mailed, though we discovered that the dollar didn't fully cover the postage. Thanks to everyone - it has been a good year.

## Elections

So, it is that time of year again, and elections are about to begin. We are posting job descriptions on pgs 4-5, hoping to have your nominations for President, Vice-President, Treasurer, Membership Coordinator, Newsletter Editor, NPCA/PC liaison and 3 Officers-At-Large. Those nominations need to be to Hugh Ho at [wspcaeditor@yahoo.com](mailto:wspcaeditor@yahoo.com) by the submission deadline for the March newsletter (February 25). Nominations should be made with a name, where and when they served, the intended officer position and a brief description of their reasons for wanting to serve on the WSPCA board. All present officers are allowed to run for re-election but still need to submit the above information to Hugh by the deadline. The election runs through March with deadlines on the day before publishing the April newsletter. Ballots may be sent to [wspcaeditor@yahoo.com](mailto:wspcaeditor@yahoo.com) or by for secret votes, by paper ballot printed in the March newsletter. We will know the results by the end of the first week of April.

## Mission

WSPCA is a group of returned Peace Corps volunteers committed to improving international understanding at the local, state and national level by actively promoting an increased appreciation for the social, political and economic circumstances of people living in the developing world.

Officer Descriptions on pg 4-5

*"If I can't dance, I don't want to be a part of your revolution." (Emma Goldman, 1869-1940)*



### WSPCA Meeting

When: Saturday, February 11, 7 pm  
Where: 713 N 43rd St, Seattle, WA  
(206) 632-1487

The next general meeting will be at Michael Le and Annette Clothier's Fremont home. All WSPCA members are invited to attend. The agenda is:

- Elections
- Calendars
- Changes to Board
- Annual progress report
- What is happening with books and book drive
- Bring up to 3 slides of your Peace Corps or recent travel experience that tell a single story.

### WSPCA Eats Out

When: Friday, February 17, 6:30pm  
Where: Chutney's Indian Bistro, 1815 N 45th Street, Seattle

February's "Eats Out" will be held at Chutney's Indian Bistro in Wallingford, Seattle. India was a Peace Corps country from 1961 to 1975, and the Friends of India RPCV site is [www.foindia.org](http://www.foindia.org)

Chutney's Indian Bistro is located at the intersection of N 45th St and Wallingford Ave N. It is a 5 minute drive west of the 45th street exit on I-5, and Metro routes 16 and 44 stop directly in front of the restaurant. For more information, you can visit the restaurant's web site at [www.chutneysbistro.com](http://www.chutneysbistro.com)

Please contact David Bane, WSPCA Vice-President to RSVP by Thursday, Feb 16 at (206) 632-7179 or [wspcavp@yahoo.com](mailto:wspcavp@yahoo.com). As always, suggestions for the following "Eats Out" are encouraged and welcomed.

### Olympia Area Peace Corps Association (OAPCA) Dinner

submitted by Michelle Andrews, Olympia/Lacey representative

When: Friday, February 24, 6pm  
Where: Cuisine of India Restaurant  
116 4th Ave West, Olympia

### Slidell School Book Drive

submitted by Jim and Joanne Dufour, El Salvador and Nigeria

The day of our Peace Corps party, the following wish list of books was received from the faculty of Slidell Pathways School in Slidell, LA. When their school building was devastated by Katrina, they lost everything -- including their modest library. Here are the wishes of the currently faculty: [List of books and videos available at [www.rpcv-wa.org](http://www.rpcv-wa.org)]

Sending arrangements: Several mailings will be going down to Slidell. Please contact Joanne Dufour at [jamduf@hotmail.com](mailto:jamduf@hotmail.com), (206) 937-5724 or Temma Pistrang at [bibitem@yahoo.com](mailto:bibitem@yahoo.com), (206) 363-0293 [after January] for further information

OR  
feel free to order from Amazon.com and/or send directly from to Principal Jackie Landry at Slidell Pathways 333 Pennsylvania, Slidell, LA 70458

Thanks for all your help and support.

### WSPCA OFFICERS

#### CO-PRESIDENTS

Karima Homman-Ludiye  
and Brian Gay  
(425) 778-2811  
[khibmg@seanet.com](mailto:khibmg@seanet.com)

#### VICE PRESIDENT

David Bane  
(206) 632-7179  
[wspcavp@yahoo.com](mailto:wspcavp@yahoo.com)

#### SERVICE COORDINATOR

Open

#### TREASURER

Temma Pistrang  
(206) 363-0293  
[bibitem@yahoo.com](mailto:bibitem@yahoo.com)

#### MEMBERSHIP

Geoffrey Gese  
[hosher\\_bahn@yahoo.com](mailto:hosher_bahn@yahoo.com)

#### NEWSLETTER EDITOR

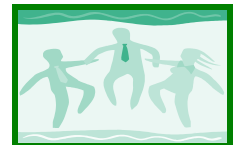
Hugh Ho  
(206) 729-6138  
[wspcaeditor@yahoo.com](mailto:wspcaeditor@yahoo.com)

#### WEBMASTER

Chuck Brennick  
[brennick@nvmundo.com](mailto:brennick@nvmundo.com)

#### PC/NPCA LIAISON

Paulette Thompson  
(206) 325-8073  
[pqthompson@seattleschools.org](mailto:pqthompson@seattleschools.org)



next hangout

last Tuesday  
in February

2/28/06

7 to 9 pm

Shultz's  
in the U-District

(children welcome)

4114 University Way NE,  
Seattle

(206) 548-9461



## West Regional NPCA-affiliated Groups Meeting in Eugene, OR

submitted by Bob Findlay, NPCA Board West Regional Representative, and Gabriella Maertens (CRPCA)

Attending were WSPCA (VP David Bane and NPCA liaison Paulette Thompson), CRPCA (Gabriella Maertens), Olympia area PCA (Bob Findlay), West Cascade PCA (Pres. Beryl Brinkman, VP Wayne Thompson, Michael and Shannon Kresko, Jim Cloutier, Lori Matthew, Joe Hindman, Dorothy Roper and Pennie Moblo) and Idaho RPCVs (Pres. Sam Greer). Electronic communications were received from NorCalPCA (Stephen Watkins and Pete Johnson) and Anchorage RPCVs (Alison Mall).

### Group Updates

In a round of group reports, it was interesting to hear about efforts of our groups to reinvigorate their membership by interviewing and surveying members in order to recalibrate their groups purpose and activities, and by waiving local group fees in order to enhance membership in both local groups and in NPCA. The sharing of these experiences, and the venue for mutual help among our groups, is often the most valuable part of our thrice-annual regional meetings.



2005 holiday party  
(Michael Le)

### NPCA Report

Findlay cited the extensive and effective lobbying efforts of NPCA to re-separate Peace Corps volunteering and military service, a link that was parenthetically added to a military spending bill over two years ago and only appeared on the radar screen when the military touted the program in its recruiting efforts. This lobbying effort on the part of NPCA staff was NPCA at its best, working for the Peace Corps community.

In the contentious area of NPCA services for members and affiliated groups, a number of proposals are coming forward from a membership study committee (in which a number of our regional group leaders participated) and from NPCA staff and board executives. The proposals will soon be sent to group leaders and will be on the table at the upcoming board meeting in Austin TX in early February. At the extremes, they range from changing membership to free and universal to developing a more robust package of services with correspondingly higher fees. Most proposals are for more moderate changes in practices aimed at reducing group leader and NPCA staff efforts such as all-electronic membership renewals at reduced cost and annual group re-affiliation at reduced or no cost. The reduction in costs is associated with enhanced electronic processing of memberships and re-affiliations.

Given the recurring problems at NPCA in processing both, including monthly fund transfers, it was difficult to assess the credibility of the proposals at this meeting. A periodic broadcast of NPCA accomplishments (perhaps a synopsis of the monthly report to the board) and noticeable improvement in electronic services to members and groups would enhance perceived value within the organization and provide a basis to assess procedural changes.

A proposal for universal and no cost membership was favorably received at this meeting as it had the potential to eliminate the accounting and recording burden on NPCA. It also was agreed that NPCA as spokesperson for all RPCVs and former staff (acknowledging that only about half would be identifiable) would be more credible than speaking for only 5% of returnees who paid a \$25 membership. NPCA funding would come from grants, contracts and donations, as it now does, but with donations from a considerably larger pool of members.

### In Other Business

Copies were distributed of the Arrowhead Declaration, a statement on U.S. foreign policy developed by the first PC volunteers to serve in Liberia (62-64). Groups are encouraged to review the declaration and to add their endorsement through the NPCA Group Leaders Forum. Further information is available from Sam Greer at [s.greer@cl.idaho.gov](mailto:s.greer@cl.idaho.gov). Greer also distributed draft templates for City or State proclamations of Peace Corps Week.

### Upcoming Regional Events:

- |                 |  |
|-----------------|--|
| March 5, 2006:  | Education and Post-Peace Corps Experience<br>Peace Corps/NPCA Open House in Portland (a PC 45th Anniversary event) 1-5pm at the Smith Center, Portland State University<br><a href="http://www.CRPCA.org">www.CRPCA.org</a>            |
| May, 2006       | West Region NPCA-affiliated Group Leaders Meeting and annual PC/WSPCA nomination event in Seattle <a href="http://www.WSPCA.org">www.WSPCA.org</a>   |
| August 3-6      | SUMMER OF PEACE 2006<br>RPCV West Region Campout (another PC 45th Anniversary event)<br>Dworshak State Park, near Orofino, Idaho (hosted by Idaho RPCVs)<br><a href="http://www.CRPCA.org/campout.html">www.CRPCA.org/campout.html</a> |
| September 15-16 | Peace Corps 45th Anniversary Celebrations in Washington, D.C.<br>NPCA annual meeting, Group Leaders Forum, and board meeting   |
| January 6, 2007 | West Region NPCA-affiliated Group Leaders Meeting and annual post-holiday pizza party at the Lucky Lab in Portland with the CRPCA  |



## WSPCA Officer Descriptions

submitted by current WSPCA officers

These all make good general qualifications for any officer:

- Desired qualifications:
  - ⇒ Interest in leading WSPCA membership
  - ⇒ Somewhat recently returned volunteers are preferred to bring new ideas for the organization.
- Benefits:
  - ⇒ Leadership skill-building in areas of planning, reporting, decision-making.
  - ⇒ Great on resume - one of the least time-consuming nonprofit board officer positions you'll find.
  - ⇒ Monthly reason to have to hang out with great people.
  - ⇒ Typical term length: 2+ years or longer desired
  - ⇒ Time commitment: monthly newsletter assembly gatherings plus meetings with the Officer Board

### President

- Represents the WSPCA at events, assuring through delegation the smooth operation and attendance of the event and preparing welcoming and promotional remarks at any public event.
- Provides leadership for the WSPCA, shaping the agenda, adhering to the mission, maintaining a coherent message for group members, keeping the membership informed through the newsletter and other media.
- Coordinating the Officer Board, determines when job duties need to be split or combined, encourages and assists Board members and prepares and leads meetings
- Supports the NPCA Liaison; provides feedback on national information and its impact on the WSPCA
- Is a liaison with regional Peace Corps office and other Returned Peace Corps volunteer organizations through their group leaders
- The regional Peace Corps office is a valuable source of information about potential members or news and may be an advocate for projects or an assist with events
- Group leaders share information about effective membership participation, recruitment, outreach to the public, social events
- Reports group activities to the membership.

### Vice-President

- Stands in for the President in case they are unable to fulfill the tasks and duties of the president.
- Organizes and coordinates social events for WSPCA, including a monthly get-together, seasonal gatherings, and outdoor opportunities
- Write reports for newsletter on gatherings and activities
- Coordinate with other service organizations to leverage our public image
- Consults with President on direction and means of the WSPCA to assure the relationship to the mission of the group's activities
- Supports promotion of the organization and its relationship to other RPCV regional groups
- Develops relationships with the membership in order to determine interests for direction of the organization
- Specifically create and maintain ties with RPCVs teaching in local schools and working with local civic organizations
- Assist outreach speakers to create effective presentations to schools and civic organizations

### NPCA/PC Liaison

- Maintains contact with the Peace Corps national organization and the local recruiting office
- Maintains contact with NPCA, reporting and distilling its activities to the local membership
- Works to get the local membership involved with NPCA & Peace Corps advocacy
- Publishes reports and news monthly on the world of Peace Corps
- In collaboration with the Officer Board and at the will of the membership, actively pursues the goals of the WSPCA as an advocate to NPCA and to Peace Corps
- Attends meetings of the regional organization and reports on its activities to the membership

### Membership Coordinator

- Picks up new member requests from WSPCA mailbox
- Shares information with the Treasurer
- Maintains database and regularly checks it for accuracy
- Receives information from NPCA pass-through memberships
- Prints out mailing labels and delivers them to newsletter folding site by the day of the newsletter folding
- With the treasurer, makes an annual report to membership on trends and fluctuations of the membership body

### Treasurer

- The Treasurer is responsible for the day-to-day financial affairs and accounting of the organization
- Responsible for monitoring the organization's revenues and expenses with a bank account balance in the range of \$5,000-7,000
- Time commitment: 2 hours per month
- Monthly responsibilities:
  - ⇒ Receives and records all individual membership dues payments and NPCA's pass-through memberships
  - ⇒ Deposits membership checks into bank account
  - ⇒ Submits new NPCA member information and payments to NPCA
  - ⇒ Writes an average of 5-6 checks per month according to expenses incurred
  - ⇒ Keeps full and accurate account of all organizational receipts and disbursements via financial software (currently using Microsoft Money, but new Treasurer can select preferred software). Annually the Treasurer submits financial statement to WSPCA membership and to NPCA.



### Officers-at-Large (3)

These three officers are elected as generalists who may adopt specific tasks or may share portions of the same task, as needed. Among the potential tasks are:

- **To run the Speaker's Bureau**, coordinating speakers, publicizing opportunities, assisting speakers with skill development and managing relationships with engagement organizations and schools. In collaboration with the Vice President.
- **To create and maintain ties** with RPCVs teaching in local schools and working with local civic organizations
- **To coordinate service opportunities**
- **To edit the newsletter**
- **To manage the website**, web pages, and coordinate the publication of an on-line newsletter

### Looking for a Job?

submitted by Edina Butler, Peace Corps Seattle Regional Office, Mauritania 00-02

Whether you just returned from service or are simply looking for a career change, you are welcome to visit the RPCV Career Center at the Seattle regional recruiting office. You'll find a broad range of materials at your fingertips such as employment listings, volunteer opportunities, graduate programs and career resource books.

Materials include:

- \* free Internet and Microsoft Office access
- \* a free phone to use to make appointments or professional contacts
- \* job postings of local, national and international employment
- \* volunteer opportunities
- \* graduate program brochures
- \* publications guiding you through career changes, networking, resume writing and interviewing
- \* RPCV career resource directory listing RPCVs by their profession

RPCV Career Center hours are Monday through Friday, 9 am to 4:30 pm. We are located at the Westlake Center office tower (1601 Fifth Avenue, Suite 605) in Seattle. Our phone number is (206) 553-5490. We recommend taking the bus or parking at the Macy's parking lot on 3rd and Stewart Street or in meters along 5th Ave. and 6th Ave.

## MEMBERSHIP FORM

Please fill in the appropriate information to update your status with either WSPCA or NPCA. Please make all checks payable to WSPCA. Thanks!

Check here if this is an address change

#### Annual Membership Options

- \$50 - NPCA and WSPCA single membership
- \$65 - NPCA and WSPCA couple membership
- \$15 - WSPCA only single membership
- \$22.50 - WSPCA only couple membership
- \$7.50 - WSPCA only low-income

Recently COSed RPCVs receive a free 1-year trial membership in NPCA and a free 3-month trial membership in WSPCA

Amount Enclosed

**Name** \_\_\_\_\_

**Address** \_\_\_\_\_

\_\_\_\_\_

**Home Phone** \_\_\_\_\_ **Work Phone** \_\_\_\_\_

**E-mail address** \_\_\_\_\_

I would like my newsletter sent by email (instead of mail)

I am a current NPCA member  Yes  No Exp. Date? \_\_\_\_\_

**Peace Corps Info** \_\_\_\_\_

**Country of Service/Years** \_\_\_\_\_

**Position** \_\_\_\_\_

**Current Job Title** \_\_\_\_\_

mail form to: WSPCA, PO Box 55914, Shoreline, WA 98155-9998



# Upcoming Events

## February

February 11 - WSPCA Meeting (p.2)

February 17 - WSPCA Eats Out (p.2)

February 24 - Olympia Area Dinner (p.2)

February 28 - Hang Out at Shultzzy's (p.2)

and coming up:

March 5 - NPCA/PC Open House in Portland (p.3)

## Satellite Groups

Olympia/Lacey

**Michelle Andrews**  
(253) 770-6260  
andrewmd2@msn.com

Bellingham

**Cat McIntyre**  
(360) 671-1986/0541 (fax)  
mcintyre@comcast.net

Bainbridge Island

**Carole Gates**  
(206) 780-9586  
carole.gates@ee.doe.gov

2005 holiday party  
(Michael Le)



# Officer Descriptions and Nominations

**WSPCA**  
**PO Box 55914**  
**Shoreline, WA 98155-9998**

ADDRESS SERVICE REQUESTED

Check out our website!  
[www.rpcv-wa.org](http://www.rpcv-wa.org)

Submissions for the March newsletter are due by February 25.  
E-mail submissions to: [wspcaeditor@yahoo.com](mailto:wspcaeditor@yahoo.com)